

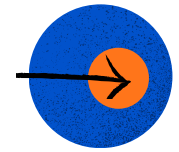
Build It With You Onboard or Relaunch with Asana Starter

We'll give you the knowledge, skills and confidence to roll out Asana Starter within your organisation or team. Through our Asana Onboard package, we will focus on establishing your work management foundations and ways of working, setting up your key projects and processes, bringing your people onto Asana, and setting you up for ongoing success

Your Apparatus Quo Asana expert will guide you through **change management** strategies, **best practices for managing your workflows** in Asana, and **interactive training** of your team. We'll ground the discussions in our change management framework, Asana Way of Change, to ensure your lasting success with Asana

- ✓ Fit-for-purpose Asana implementation plan for you to deploy to your team or organisation
- ✓ Expert support with building custom workflow or project
- ✓ Facilitated interactive team training session
- ✓ Track your Asana ROI and measurable outcomes
- ✓ Tailored insights, advice, and additional resources

Phase	Workshops & Training	Best Practice & Resources
 Strategy	<ul style="list-style-type: none"> Kick-off discovery and solution design workshop (x1) 	<ul style="list-style-type: none"> Kick-off team survey - baseline for Work Management Current State Selection of first workflow to use for guided build High-level processes review High-level systems architecture diagram Asana team structure review and recommendations Set up your Asana Subscription under Apparatus Quo
 Alignment	<ul style="list-style-type: none"> Asana Prototyping sessions (x2)* Asana training session (x1) 	<ul style="list-style-type: none"> Scalable, self-paced 'My Asana Start Guide' learning journey template assigned to users Baseline 'Asana Conventions' project, summarising standards and ways of working for the team or organisation Running effective 1:1s in Asana template
 Scale	<ul style="list-style-type: none"> Asana expert 1:1 sessions (x4) Impact review workshop (x1) 	<ul style="list-style-type: none"> Examine efficiency and clarity gains from our onboarding engagement and provide recommendations to ensure your success in the future. Asana Q&A Form created for team member questions to your Asana champions (and for us!) Kick-off Quarterly Asana Office hours rhythm






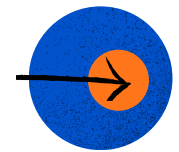
Build It With You Onboard or Relaunch with Asana Advanced

We'll give you the knowledge, skills and confidence to roll out Asana Advanced within your organisation or team. Through our Asana Onboard offering, we will focus on establishing your work management foundations and ways of working, simplifying collaboration across teams, setting up your company goals, understanding team capacity, and setting up the critical work in one place, so you can see progress in real-time and keep teams on track.

Your Apparatus Quo Asana expert will guide you through **change management** strategies, **best practices for managing your workflows** in Asana, and **interactive training** of your team. We'll ground the discussions in our change management framework, Asana Way of Change, to ensure your lasting success with Asana

- ✓ Fit-for-purpose Asana implementation plan for you to deploy to your team or organisation
- ✓ Expert support with building custom workflow or project
- ✓ Facilitated interactive team training session
- ✓ Track your Asana ROI and measurable outcomes
- ✓ Tailored insights, advice, and additional resources

Phase	Workshops & Training	Best Practice & Resources
 Strategy	<ul style="list-style-type: none"> Kick-off discovery and solution design workshop (x1) 	<ul style="list-style-type: none"> Kick-off team survey - baseline for Work Management Current State Selection of first workflow to use for guided build High-level processes review High-level systems architecture diagram Asana team structure review and recommendations Set up your Asana Subscription under Apparatus Quo
 Alignment	<ul style="list-style-type: none"> Asana Prototyping sessions (x2) Asana training session (x1) 	<ul style="list-style-type: none"> Scalable, self-paced 'My Asana Start Guide' learning journey template assigned to users Baseline 'Asana Conventions' project, summarising standards and ways of working for the team or organisation Running effective 1:1s in Asana template
 Scale	<ul style="list-style-type: none"> Live interactive 1:1 sessions (x4) Impact review workshop (x1) 	<ul style="list-style-type: none"> Examine efficiency and clarity gains from our onboarding engagement and provide recommendations to ensure your success in the future. Asana Q&A Form created for team member questions to your Asana champions (and for us!) Kick-off Quarterly Asana Office hours rhythm






Build It With You Onboard or Relaunch with Asana Enterprise

We'll give you the knowledge, skills and confidence to roll out Asana Enterprise within your organisation or team. Through our Asana Onboard offering, we will focus on embedding Asana's full suite of powerful admin controls and enterprise-ready features for bringing strategy, goals, and integrated work management to life - empowering a connected agile organisation that adapts and scales with confidence. Connect people to purpose with Goals, unify teams through integrated workflows and projects, make data-backed decisions with advanced reporting and analytics, and trust your work is secure and scalable with Asana's robust infrastructure.

Your Apparatus Quo Asana expert will guide you through **change management** strategies, **best practices for managing your workflows** in Asana, and **interactive training** of your team. We'll ground the discussions in our change management framework, Asana Way of Change, to ensure your lasting success with Asana

- ✓ Fit-for-purpose Asana implementation plan for you to deploy to your team or organisation
- ✓ Expert support with building custom workflow or project
- ✓ Facilitated interactive team training session
- ✓ Track your Asana ROI and measurable outcomes
- ✓ Tailored insights, advice, and additional resources

Phase	Workshops & Training	Best Practice & Resources
 Strategy	<ul style="list-style-type: none"> Kick-off discovery and solution design workshop (x1) 	<ul style="list-style-type: none"> Kick-off team survey - baseline for Work Management Current State Selection of first workflow to use for guided build High-level processes review High-level systems architecture diagram Asana team structure review and recommendations Set up your Asana Subscription under Apparatus Quo
 Alignment	<ul style="list-style-type: none"> Asana Prototyping sessions (x2) Asana training session (x1) Asana Admin Console 101 (x1) 	<ul style="list-style-type: none"> Scalable, self-paced 'My Asana Start Guide' learning journey template assigned to users Baseline 'Asana Conventions' project, summarising standards and ways of working for the team or organisation Running effective 1:1s in Asana template
 Scale	<ul style="list-style-type: none"> Live interactive 1:1 sessions (x4) Impact review workshop (x1) 	<ul style="list-style-type: none"> Examine efficiency and clarity gains from our onboarding engagement and provide recommendations to ensure your success in the future. Asana Q&A Form created for team member questions to your Asana champions (and for us!) Kick-off Quarterly Asana Office hours rhythm